



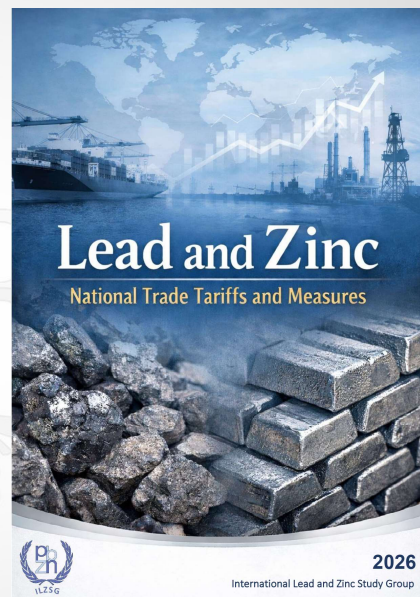
OVERVIEW OF NATIONAL TRADE TARIFFS AND MEASURES & INTRODUCTION TO THE 2026 DIRECTORIES

DANIELA LOBARINHAS

Manager of Statistical Analysis
International Lead and Zinc Study Group (ILZSG)

22 April 2026

LEAD AND ZINC
NATIONAL TRADE TARIFFS
AND MEASURES



LEAD AND ZINC NATIONAL TRADE TARIFFS AND MEASURES

- Global Trade Framework

- After World War II, countries aimed to reduce protectionism and promote economic cooperation
- Creation of the General Agreement on Tariffs and Trade (GATT) in 1948
- Main objectives:
 - Reduce tariffs between countries
 - Promote international trade
 - Establish common trade rules
- In 1995, GATT evolved into the World Trade Organization (WTO)
- Today the WTO regulates global trade relations among most countries



- WTO member
- WTO Observer negotiating accession
- WTO non-member

www.ilzsg.org

© International Lead and Zinc Study Group

3

LEAD AND ZINC NATIONAL TRADE TARIFFS AND MEASURES

- Role of Trade Agreements

Main characteristics of RTAs

- Reduction or elimination of tariffs on traded goods
- Preferential market access between member countries
- Simplified customs procedures and trade regulations
- Greater economic integration between participating economies

Examples of Major Trade Agreements

- European Union Single Market
- MERCOSUR
- Association of Southeast Asian Nations Free Trade Area (ASEAN)
- Comprehensive and Progressive Agreement for Trans-Pacific Partnership



ASSOCIATION
OF SOUTHEAST
ASIAN NATIONS

A COMMUNITY OF
OPPORTUNITIES FOR ALL

www.ilzsg.org

© International Lead and Zinc Study Group

4

LEAD AND ZINC NATIONAL TRADE TARIFFS AND MEASURES

- Tariff Structure for Lead and Zinc

International trade tariffs vary depending on the stage of processing:

Lead ores and concentrates 260700	Zinc ores and concentrates 260800
Lead Metals 780110 – <i>refined</i> 780191 – <i>antimonial lead</i> 780199 – <i>other</i>	Zinc Metals 790111 – <i>refined >99.99%</i> 790112 – <i>refined < 99.99%</i> 790120 – <i>alloys</i>
Lead waste and scrap 780200	Zinc waste and scrap 790200

Classification is based on the **Harmonized Commodity Description and Coding System (HS)** used globally.

LEAD AND ZINC NATIONAL TRADE TARIFFS AND MEASURES

- Tariffs, Taxes and Import Charges

Tariffs

- By product category
- *Ad valorem percentages (%)*
 - Weight-based duties indicated in some cases
- MFN applied tariff rates
 - Other tariff rates may also be indicated

Additional taxes - Common examples:

- **Value Added Tax (VAT)**
- **Goods and Services Tax (GST)**

These taxes are applied to the **import value**, often including the tariff.

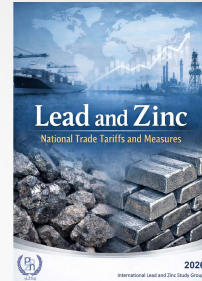
Disclaimer

Temporary or exceptional measures, including safeguards, anti-dumping and countervailing duties, emergency surcharges and trade sanctions or restrictive measures, are not covered by this report.

LEAD AND ZINC NATIONAL TRADE TARIFFS AND MEASURES

- Index

Algeria.....	8	New Zealand.....	38
Argentina.....	9	Nigeria.....	39
Australia.....	10	North Macedonia.....	40
Bangladesh.....	11	Norway.....	41
Bolivia.....	12	Pakistan.....	43
Brazil.....	13	Peru.....	44
Canada.....	15	Philippines.....	45
Chile.....	16	Russian Federation.....	46
China.....	18	Saudi Arabia.....	48
Hong Kong, SAR of China.....	19	Serbia.....	49
Colombia.....	20	Singapore.....	50
Costa Rica.....	21	South Africa.....	51
Egypt.....	22	Sri Lanka.....	52
European Union.....	23	Switzerland.....	53
Guatemala.....	25	Taiwan, China.....	55
India.....	26	Thailand.....	56
Indonesia.....	27	Tunisia.....	57
Iran.....	28	Türkiye.....	58
Israel.....	29	Ukraine.....	59
Japan.....	30	United Kingdom.....	60
Kazakhstan.....	32	United States.....	62
Kenya.....	33	Uzbekistan.....	64
Korea, Republic of.....	34	Venezuela.....	65
Malaysia.....	35	Vietnam.....	66
Mexico.....	36	Zambia.....	67
Morocco.....	37		



49 countries

+

European Union

+

Hong Kong, SAR of China

LEAD AND ZINC NATIONAL TRADE TARIFFS AND MEASURES

- Content

Argentina

GENERAL TRADE POLICY
 Argentina has been a member of the WTO since its inception in 1995. Trade policy has combined participation in the multilateral trading system with measures aimed at supporting domestic industry, within a managed approach to trade liberalisation.

REGIONAL TRADE AGREEMENTS

<ul style="list-style-type: none"> IN FORCE <ul style="list-style-type: none"> • Association for Latin American Integration (ALAI) • Global System of Trade Preferences among Developing Countries (GSTP) • Mexico • Southern Common Market (MERCOSUR) <ul style="list-style-type: none"> • MERCOSUR – Egypt • MERCOSUR – India • MERCOSUR – Israel 	<ul style="list-style-type: none"> • MERCOSUR – the Southern African Customs Union (SACU) <p>ACCESSIONS</p> <ul style="list-style-type: none"> • LAIA – Accession of Cuba <p>BTAs Early Announcement</p> <ul style="list-style-type: none"> • EFTA – MERCOSUR • CETA – MERCOSUR • Canada – MERCOSUR
-------------------------------------------------------------------------------------------------------------------------------------------------------------------------------------------------------------------------------------------------------------------------------------------------------------------------------------------------------------------------------------------------------------------------------------------------------------------------------------------------	----------------------------------------------------------------------------------------------------------------------------------------------------------------------------------------------------------------------------------------------------------------------------------------------------------------------------------------------------------------------------------

LEAD AND ZINC TARIFF SCHEDULE

HS Code	Description	Rate of Duty (per cent)
280700	Lead ores and concentrates	3.6
790130	Unsmelted lead; refined lead	7.2
790191	Unsmelted lead - Containing by weight antimony in the principal other element	5.4
790199	Unsmelted lead - (not refined lead and lead containing by weight antimony in the principal other element)	5.4
790200	Lead waste and scrap	3.6
280800	Zinc ores and concentrates	6.0
790211	Unsmelted zinc - not alloyed - containing by weight 90.90% or more of zinc	5.4
790212	Unsmelted zinc - not alloyed - containing by weight less than 90.90% of zinc	5.4
	- (HS Code 79021200)	5.4
	- Other than (HS Code 79021200)	5.4
790230	Unsmelted zinc - alloyed	7.2
	- (HS Code 79023000)	7.2
	- Other than (HS Code 79023000)	7.2
790290	Zinc waste and scrap	6.0

ADDITIONAL TAXES

VAT is levied at a 21% rate of the CIF value plus duty rates. A Statistic Fee is applied as an ad valorem charge on the customs value, with the rate and cap set to decrease and subject to periodic changes (imports from MERCOSUR member countries are exempt). In addition, a Verification Tax of up to 2% of the customs value may apply to imports benefiting from special tax or duty concessions.

SPECIAL PREFERENCES

Imports from Brazil, Paraguay and Uruguay are generally free of duty under MERCOSUR, provided the goods meet the applicable rules of origin. Imports from countries that have BTAs in force with Argentina may receive preferential treatment.

GENERAL TRADE POLICY

Argentina has been a member of the WTO since its inception in 1995. Trade policy has combined participation in the multilateral trading system with measures aimed at supporting domestic industry, within a managed approach to trade liberalisation.

LEAD AND ZINC NATIONAL TRADE TARIFFS AND MEASURES

- Content

Argentina

GENERAL TRADE POLICY
 Argentina has been a member of the WTO since its inception in 1995. Trade policy has combined participation in the multilateral trading system with measures aimed at supporting domestic industry, within a managed approach to trade liberalization.

REGIONAL TRADE AGREEMENTS	
IN FORCE	<ul style="list-style-type: none"> MERCOSUR – the Southern African Customs Union (SACU) Association for Latin American Integration (LAIA) Global System of Trade Preferences among Developing Countries (GSTP) Mexico Southern Common Market (MERCOSUR) MERCOSUR – Egypt MERCOSUR – India MERCOSUR – Israel
	<ul style="list-style-type: none"> ACCESSIONS LAIA – Accession of Cuba RTAs Early Announcement EFTA – MERCOSUR Canada – MERCOSUR

LEAD AND ZINC TARIFF SCHEDULE		
HS Code	Description	Rate of Duty (Ad valorem %)
260700	Lead ores and concentrates	3.6
780110	Unwrought lead – Refined lead	7.2
780191	Unwrought lead – Containing by weight antimony as the principal other element	5.4
780199	Unwrought lead – (excl. refined lead and lead containing by weight antimony as the principal other element)	5.4
780200	Lead waste and scrap	3.6
260800	Zinc ores and concentrates	0.0
790111	Unwrought zinc – not alloyed – containing by weight 99.99% or more of zinc	7.2
790112	Unwrought zinc – not alloyed – containing by weight less than 99.99% of zinc: - Ingots (code 79011210) - Other than ingots (code 79011290)	7.2 5.4
790120	Unwrought zinc – Alloys - Ingots (code 79012010) - Other than ingots (code 79012090)	7.2 7.2
790200	Zinc waste and scrap	0.0

ADDITIONAL TAXES
 VAT is levied at a 21% rate of the CIF value plus duty rates. A Statistics Fee is applied as an ad valorem charge on the customs value, with the rate and cap set by decree and subject to periodic changes. Imports from MERCOSUR member countries are exempt. In addition, a Verification Tax of up to 2% of the customs value may apply to imports benefiting from special tax or duty concessions.

SPECIAL PREFERENCES
 Imports from Brazil, Paraguay and Uruguay are generally free of duty under MERCOSUR, provided the goods meet the applicable rules of origin. Imports from countries that have RTAs in force with Argentina may receive preferential treatment.

REGIONAL TRADE AGREEMENTS

IN FORCE

- Association for Latin American Integration (LAIA)
- Global System of Trade Preferences among Developing Countries (GSTP)
- Mexico
- Southern Common Market (MERCOSUR)
- MERCOSUR – Egypt
- MERCOSUR – India
- MERCOSUR – Israel

- MERCOSUR – the Southern African Customs Union (SACU)

ACCESSIONS

- LAIA – Accession of Cuba

RTAs Early Announcement

- EFTA – MERCOSUR
- Canada – MERCOSUR

LEAD AND ZINC NATIONAL TRADE TARIFFS AND MEASURES

- Content

Argentina

GENERAL TRADE POLICY
 Argentina has been a member of the WTO since its inception in 1995. Trade policy has combined participation in the multilateral trading system with measures aimed at supporting domestic industry, within a managed approach to trade liberalization.

REGIONAL TRADE AGREEMENTS	
IN FORCE	<ul style="list-style-type: none"> MERCOSUR – the Southern African Customs Union (SACU) Association for Latin American Integration (LAIA) Global System of Trade Preferences among Developing Countries (GSTP) Mexico Southern Common Market (MERCOSUR) MERCOSUR – Egypt MERCOSUR – India MERCOSUR – Israel
	<ul style="list-style-type: none"> ACCESSIONS LAIA – Accession of Cuba RTAs Early Announcement EFTA – MERCOSUR Canada – MERCOSUR

LEAD AND ZINC TARIFF SCHEDULE		
HS Code	Description	Rate of Duty (Ad valorem %)
260700	Lead ores and concentrates	3.6
780110	Unwrought lead – Refined lead	7.2
780191	Unwrought lead – Containing by weight antimony as the principal other element	5.4
780199	Unwrought lead – (excl. refined lead and lead containing by weight antimony as the principal other element)	5.4
780200	Lead waste and scrap	3.6
260800	Zinc ores and concentrates	0.0
790111	Unwrought zinc – not alloyed – containing by weight 99.99% or more of zinc	7.2
790112	Unwrought zinc – not alloyed – containing by weight less than 99.99% of zinc: - Ingots (code 79011210) - Other than ingots (code 79011290)	7.2 5.4
790120	Unwrought zinc – Alloys - Ingots (code 79012010) - Other than ingots (code 79012090)	7.2 7.2
790200	Zinc waste and scrap	0.0

ADDITIONAL TAXES
 VAT is levied at a 21% rate of the CIF value plus duty rates. A Statistics Fee is applied as an ad valorem charge on the customs value, with the rate and cap set by decree and subject to periodic changes. Imports from MERCOSUR member countries are exempt. In addition, a Verification Tax of up to 2% of the customs value may apply to imports benefiting from special tax or duty concessions.

SPECIAL PREFERENCES
 Imports from Brazil, Paraguay and Uruguay are generally free of duty under MERCOSUR, provided the goods meet the applicable rules of origin. Imports from countries that have RTAs in force with Argentina may receive preferential treatment.

LEAD AND ZINC TARIFF SCHEDULE

HS Code	Description	Rate of Duty (Ad valorem %)
260700	Lead ores and concentrates	3.6
780110	Unwrought lead – Refined lead	7.2
780191	Unwrought lead – Containing by weight antimony as the principal other element	5.4
780199	Unwrought lead – (excl. refined lead and lead containing by weight antimony as the principal other element)	5.4
780200	Lead waste and scrap	3.6
260800	Zinc ores and concentrates	0.0
790111	Unwrought zinc – not alloyed – containing by weight 99.99% or more of zinc	7.2
790112	Unwrought zinc – not alloyed – containing by weight less than 99.99% of zinc: - Ingots (code 79011210) - Other than ingots (code 79011290)	7.2 5.4
790120	Unwrought zinc – Alloys - Ingots (code 79012010) - Other than ingots (code 79012090)	7.2 7.2
790200	Zinc waste and scrap	0.0

Tariffs year 2025. Based on the HS22 nomenclature

LEAD AND ZINC NATIONAL TRADE TARIFFS AND MEASURES

- Content

Argentina

GENERAL TRADE POLICY
 Argentina has been a member of the WTO since its inception in 1995. Trade policy has combined participation in the multilateral trading system with measures aimed at supporting domestic industry, within a managed approach to trade liberalisation.

REGIONAL TRADE AGREEMENTS

FORCE

- Association for Latin American Integration (ALAI)
- Global System of Trade Preferences among Developing Countries (GSTP)
- Mexico
- Southern Common Market (MERCOSUR)
- MERCOSUR – Egypt
- MERCOSUR – India
- MERCOSUR – Israel

• MERCOSUR – the Southern African Customs Union (SACU)

ACCESSIONS

- Cuba – Association of Cuba

RTAs Early Assessment

- EFTA – MERCOSUR
- Canada – MERCOSUR

LEAD AND ZINC TARIFF SCHEDULE

HS Code	Description	Rate of Duty per cent
280700	Lead ores and concentrates	3.6
780110	Unwrought lead – refined lead	7.2
780191	Unwrought lead – Containing by weight antimony as the principal other element	5.4
780199	Unwrought lead (lead) refined lead and lead containing by weight antimony as the principal other element	5.4
780300	Lead waste and scrap	3.6
280800	Zinc ores and concentrates	6.0
780211	Unwrought zinc – not alloyed – containing by weight 90.00% or more of zinc	7.2
780212	Unwrought zinc – not alloyed – containing by weight less than 90.00% of zinc: - Other than India (code 78021200)	7.2
780213	Unwrought zinc – not alloyed – containing by weight less than 90.00% of zinc: - Other than India (code 78021300)	7.2
780219	Zinc waste and scrap	6.0

ADDITIONAL TAXES
 VAT is levied at a 21% rate of the CIF value plus duty rates. A Statistics Fee is applied as an ad valorem charge on the customs value, with the rate and caps set by decree and subject to periodic changes; imports from MERCOSUR member countries are exempt. In addition, a Verification Tax of up to 2% of the customs value may apply to imports benefiting from special tax or duty concessions.

SPECIAL PREFERENCES
 Imports from Brazil, Paraguay and Uruguay are generally free of duty under MERCOSUR, provided the goods meet the applicable rules of origin. Imports from countries that have RTAs in force with Argentina may receive preferential treatment.



ADDITIONAL TAXES

VAT is levied at a 21% rate of the CIF value plus duty rates. A Statistics Fee is applied as an ad valorem charge on the customs value, with the rate and caps set by decree and subject to periodic changes; imports from MERCOSUR member countries are exempt. In addition, a Verification Tax of up to 2% of the customs value may apply to imports benefiting from special tax or duty concessions.

SPECIAL PREFERENCES

Imports from Brazil, Paraguay and Uruguay are generally free of duty under MERCOSUR, provided the goods meet the applicable rules of origin. Imports from countries that have RTAs in force with Argentina may receive preferential treatment.

LEAD AND ZINC NATIONAL TRADE TARIFFS AND MEASURES

– Updates since last edition (2021)

BREXIT – The United Kingdom leaves the European Union (2020)



USA – Trump tariffs (since 2025)



- Section 122 (Global Surcharge)

TRADE DUTY

Reduced tariffs

- Argentina (excl. Zn scrap)
- Brazil
- India (only Pb/Zn concentrates)
- Pakistan
- Saudi Arabia (only Pb metal)
- Uzbekistan

Increased tariffs

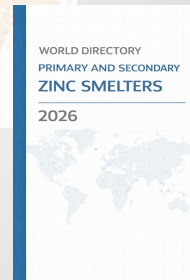
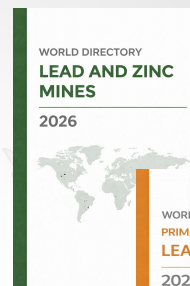
- Argentina (only Zn scrap)
- Costa Rica
- India (Pb/Zn metal and scrap)

LEAD AND ZINC NATIONAL TRADE TARIFFS AND MEASURES – Global Tariff

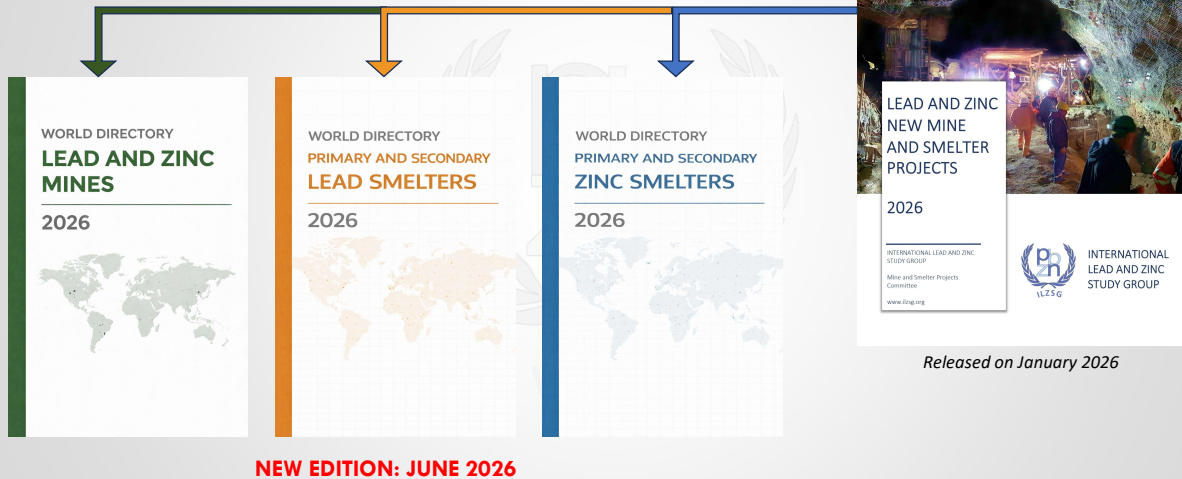
Product category	Highest Tariff Rate	Country Applying Highest Rate	Average Tariff (All listed countries)
Lead Ores & Concentrates	10%	Bolivia	1.6%
Unwrought Lead	15%	Saudi Arabia	2.8%
Unwrought Lead (antimonial lead)	15%	Algeria, Malaysia, Saudi Arabia	3.1%
Lead Waste & Scrap	15%	Algeria	1.9%

Product category	Highest Tariff Rate	Country Applying Highest Rate	Average Tariff (All listed countries)
Zinc Ores & Concentrates	10%	Bolivia	1.4%
Refined Zinc > 99.99%	15%	Algeria	2.2%
Refined Zinc < 99.99%	15%	Algeria	3.2%
Zinc Waste & Scrap	15%	Algeria	1.9%

WORLD DIRECTORIES



ILZSG WORLD DIRECTORIES



WORLD DIRECTORIES: HOW TO ACCESS?

Directories

- ✓ Available by single purchase
- ✓ PDF format
- ✓ Includes:
 - In Operation Pb&Zn Mines / Pb Smelters / Zn Smelters
 - Info displayed by Country
- ✓ Updated annually

Online Interactive Database

- ✓ Available by 12-month subscription
- ✓ Access by ILZSG website
- ✓ Includes:
 - All Operating Mines & Smelters
 - Openings and Closures since 2000
 - Mine & Smelter Projects
- ✓ Updated annually

WD: CONTENTS

WORLD DIRECTORY
LEAD AND ZINC
MINES

2026



www.ilzsg.org

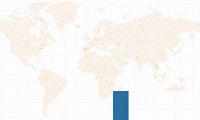
Country	Company	Mine & Location	Type	Start Up	Daily Mill Capacity tonnes	Pb Capacity tonnes	Zn Capacity tonnes
Peru (continued...)							
	Alpayana S.A. Passage Los Delfines 159, Piso 8 Urb. las Gardénias, Santiago de Surco Lima Lima 33 Tel: +51 1 217 7070 Fax: +51 1 217 7088 info@glencore.com http://www.glencoreperu.pe	Yauliyacu Chicla, Huarochiri, Lima	u/g	1997	3600	10000	30000
	Cerro de Pasco Resources Inc. Unit 203, 22 Laffleur Ave Saint-Sauveur Quebec J0R 1R0 Tel: +1 579 476 7000 Fax: +1 579 995 0104 info@pascoresources.com pascoresources.com	Santander Lima	u/g	2013	2500	12000	30000
	Compania de Minas Buenaventura Las Begonias 415, Piso 19 San Isidro Lima 15046 Tel: +51 1 419 2500 Fax: +51 1 217 3095 comunicacion.corporativa@buenaventura.pe www.buenaventura.com	Julcani Angaraes, Huancavelica	u/g	1953	600	3500	
	Compania de Minas Buenaventura Las Begonias 415, Piso 19 San Isidro Lima 15046 Tel: +51 1 419 2500 Fax: +51 1 217 3095 comunicacion.corporativa@buenaventura.pe www.buenaventura.com	Tambomayo Caylloma, Arequipa	u/g	2017	2000	15000	15000

Page 48

WD: CONTENTS

WORLD DIRECTORY
PRIMARY AND SECONDARY
LEAD SMELTERS

2026

WORLD DIRECTORY
PRIMARY AND SECONDARY
ZINC SMELTERS

2026

www.ilzsg.org

Country	Company	Location	Smelter Start Up	Process	Smelter Capacity (t)	Refinery Start Up	Process	Refinery Capacity (t)
Japan (continued...)								
	Hosokura Smelting Co. Ltd. 48 Aramachi, Uguisawa Nango Kurihara Miyagi 989-54 Tel: +81 228 55 3143 Fax: +81 228 55 3078 hosonfo@hosokura.co.jp www.hosokura.co.jp	Hosokura, Miyagi	1889	Conventional BF	29000	1889	Pyrometallurgical	22000
	Kamioka Mining & Smelting (Mitsui) 1-1 Shikama Kamioka-cho Hida-shi Gifu 506-1196 Tel: +81 578 2 2230 Fax: +81 578 2 5139 koho@mitsui-kinzoku.co.jp www.mitsui-kinzoku.co.jp	Kamioka, Gifu	1921	Conventional BF	32000	1921	Pyrometallurgical	34000
	Kawasho Co. Ltd. 515-1 Aza Kawabukuro Kamimachinaki Asaka-shi Saitama 351-0001 Tel: +81 484 56 0709 Fax: +81 484 56 2162	Asaka-shi, Saitama	1970	Secondary BF	2200	1970	Pyrometallurgical	2200
	Kosaka Smelting & Refining (Dowa) 60-1 Otanabe, Kosakakouzan Kosakamachi, Kazuno-gun Akita 017-0202 Tel: +81 186 29 2700 Fax: +81 186 29 5200 info@dowa.co.jp dowa.kosaka.co.jp	Kosaka, Akita	2000	Electric Furnace	15000	2000	Electrolytic	15000

Source: ILZSG

Page 110

International Lead and Zinc Study Group

Welcome ILZSG! [Log Out]
Create Users | Manage Users | Manage Roles

Home | Statistics | Environment | Sessions/Events | Presentations | Press Releases | Newsletters | Publications | Links

ILZSG Interactive Mine and Smelter Database

Report Selection

Base Options

In Operation

- Lead and Zinc Mines in Operation
- Lead Plants in Operation
- Zinc Plants in Operation

Openings / Closures

- Lead and Zinc Mine Openings/Closures
- Lead Plant Openings/Closures
- Zinc Plant Openings/Closures

Projects

- Lead and Zinc Mine Projects
- Lead Plant Projects
- Zinc Plant Projects
- All Lead and Zinc Projects by Country

Lead and Zinc Mines and Plants in Operation

Country: Selected [134]

All Countries:

Show Report

2013 All rights reserved - International Lead & Zinc Study Group | [Privacy](#)

www.ilzsg.org | © International Lead and Zinc Study Group | 19

International Lead and Zinc Study Group

Welcome ILZSG! [Log Out]
Create Users | Manage Users | Manage Roles

Home | Statistics | Environment | Sessions/Events | Presentations | Press Releases | Newsletters | Publications | Links

ILZSG Interactive Mine and Smelter Database

Report Selection

Base Options

In Operation

- Lead and Zinc Mines in Operation
- Lead Plants in Operation
- Zinc Plants in Operation

Openings / Closures

- Lead and Zinc Mine Openings/Closures
- Lead Plant Openings/Closures
- Zinc Plant Openings/Closures

Projects

- Lead and Zinc Mine Projects
- Lead Plant Projects
- Zinc Plant Projects
- All Lead and Zinc Projects by Country

Lead and Zinc Mines and Plants in Operation

Country: Selected [134]

All Countries:

Show Report

14 of 11 Find | Next

Lead and Zinc Mines in Operation

Company	Mine Name	Mine Type	Lead Capacity (mt)	Zinc Capacity (mt)	Details
Argentina					
Minera Aguilar (Integra Capital)	Aguilar	u/o	22000	20000	*
Puna Operations Inc. (SSR Mining Inc.)	Chinchillas	o/p	16000	6000	*
Armenia					
Gold Mining Company LLC	Kapan	u/g		8000	*
Australia					
29Metals Limited	Golden Grove (Scuddies)	u/g	2000	45000	*
Auris Resources	Jaguar (C&M from Sep 2023)	u/g		30000	*
Aurelia Metals Ltd					
Aurelia Metals Ltd	Federation	u/g	30000	42000	*
Aurelia Metals Ltd	Peak	u/g	14000	10000	*
Broken Hill Mines Limited					
Broken Hill Mines Limited	Rasp	u/g	25000	35000	*

Aguilar Mine

Company: Minera Aguilar (Integra Capital)

Address: Maipu 1252 Piso 9 CP1006 Buenos Aires Argentina

Web Address: www.mineraaguilar.com

Email: info@mineraaguilar.com

Telephone: +54 11 5530 9920

Fax:

Mine Location: Jujuy Province

Mine Type: u/o

Start-up Date: 1936

Lead Capacity: 22000 mt

Zinc Capacity: 20000 mt

Other Metals:



THANK YOU!

DANIELA LOBARINHAS

Manager of Statistical Analysis
International Lead and Zinc Study Group (ILZSG)